

Cummins M11/ISM

Oil Sampling Valves Suggested Installations (Direct Install or Remote Access Kit Install)

Installation Port: 9/16" SAE ORB (-6 SAE ORB) port on oil filter housing.

Direct Installation: If port is accessible enough to put bottle underneath for sampling, part # KP916UV can be installed directly (remove existing plug and install sample valve).

OR

Remote Access Kit Installation: If port is not accessible enough, remote access kit installation is preferred. For RA kit installations, check to confirm measurement between installation port and existing frame rail hole where valve will be mounted to make sure hose is correct length. Depending on chassis model and location of existing frame rail holes, the hose length can be specified longer or shorter if required. Please advise if different hose length is required.

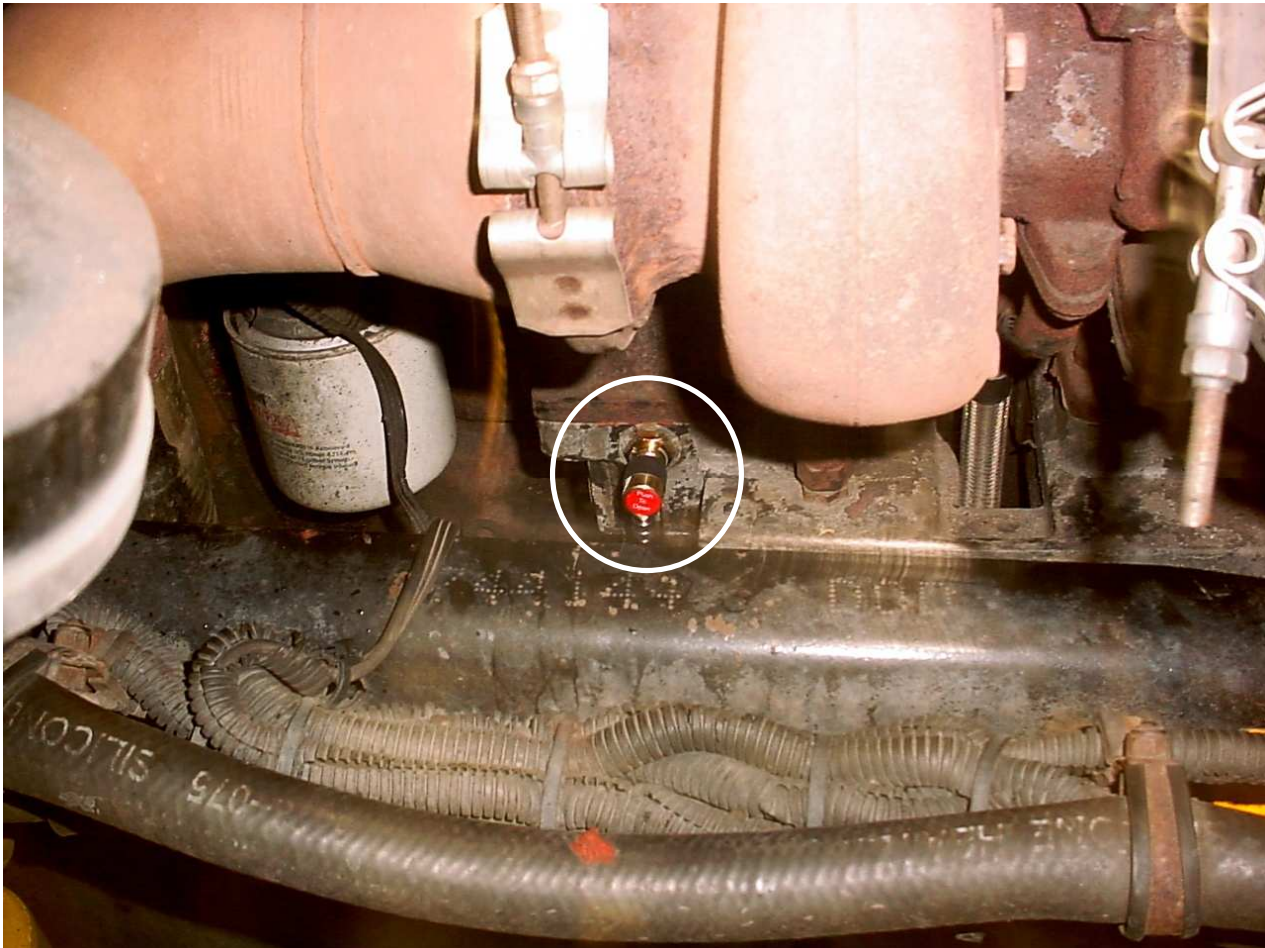
.....

Direct Installation:

Part # KP916UV (9/16" SAE ORB)

Remove plug and install valve

9/16" SAE ORB torque specification: 25.8 ft-lbs / 35 N-m



Remote Access Kit Installation:

Part # KP081-B

Includes: Port Adapter + HB5 Hose Assembly + Bulkhead Adapter + Sample Valve

- Follow all safety procedures.
- Check to confirm hose assembly is proper length for the installation.
- Install thermal wrap or loom on to hose if desired.
- Follow all SAE hose assembly installation procedures to ensure proper hose routing and connections. Hose should not rub against components or be in direct proximity to high heat from turbo.
- Remove plug and install port adapter (9/16" SAE ORB torque specification: 25.8 ft-lbs / 35 N-m).
- Install sample valve and bulkhead adapter into existing frame rail hole.
- Connect JIC female swivel straight hose end to JIC male port adapter.
- Connect other hose end (90 deg female swivel) to JIC male bulkhead adapter. Confirm proper lay line (not twisted).
- Wrench tighten hose ends to complete installation (-4 JIC torque specification: 11-12 ft-lbs / 15-16 N-m).
- Restart engine and check for leaks. Perform periodic inspections.
- Recommended pre-sample purge 1 to 2 ounces (30 to 60 mL) into waste container before taking sample.



Remote Access Conversion Kit Installation:

(Converting Direct Installation to Remote Access Installation)

Part # KP081-C (Includes: Port Adapter + HB5 Hose Assembly + 9/16" ORB Female Bulkhead Adapter)

- Follow all safety procedures.
- Check to confirm hose assembly is proper length for the installation.
- Install thermal wrap or loom on to hose if desired.
- Follow all SAE hose assembly installation procedures to ensure proper hose routing and connections. Hose should not rub against components or be in direct proximity to high heat from turbo.
- Remove KP916UV sample valve from port and install into 9/16" ORB bulkhead adapter.
- Install sample valve and bulkhead adapter into existing frame rail hole.
- Install port adapter (9/16" SAE ORB torque specification: 25.8 ft-lbs / 35 N-m).
- Connect JIC female swivel straight hose end to JIC male port adapter.
- Connect other hose end (90 deg female swivel) to JIC male bulkhead adapter. Confirm proper lay line (not twisted).
- Wrench tighten hose ends to complete installation (-4 JIC torque specification: 11-12 ft-lbs / 15-16 N-m).
- Restart engine and check for leaks. Perform periodic inspections.
- Recommended pre-sample purge 1 to 2 ounces (30 to 60 mL) into waste container before taking sample.



Checkfluid Inc.
Toll-Free: 1-866-652-8728
info@checkfluid.com
www.checkfluid.com

Warning: Improper selection or application of fluid diagnostic products can cause serious injury or damage. The user is solely responsible for making the final selection of products to ensure that the overall system performance and safety requirements are met.